

## \$800,000 - 703 Carter Crest Way, Edmonton

MLS® #E4430367

**\$800,000**

4 Bedroom, 3.00 Bathroom, 1,964 sqft

Single Family on 0.00 Acres

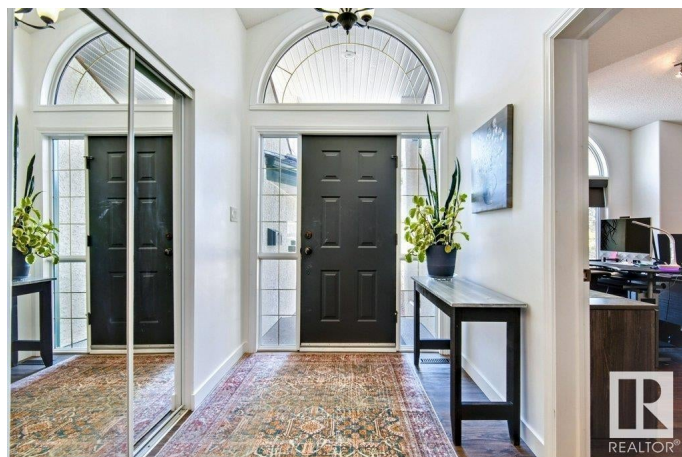
Carter Crest, Edmonton, AB

Captivating Carter Crest Bungalow offering almost 4000 Square Feet up and down, as well as 3 bedrooms on the main level and 2 more downstairs!! Prepare to be greeted by a lovely Front Office which could be used as a bedroom, Soaring Ceilings throughout, Dining Room to Host the Family, Big Kitchen with Stone Countertops and Updated Appliances, Breakfast Nook and LARGE Livingroom off the Back! Primary Bedroom with BIG Ensuite, and secondary bedroom round out the main level. Massive Open Basement is wonderful for the kids to run and play, or for a teenager hangout! 2 Spacious Bedrooms and Full Bathroom. Updated Vinyl Plank Flooring and Carpets throughout, Updated Furnace and HWT, OVERSIZED Garage measures almost 21x25, Composite Deck. NO POLY-B PLUMBING! Fantastic Access to all Shopping and Amenities at Riverbend Square AND the the River Valley - the best of BOTH WORLDS!

Built in 1997

### Essential Information

|            |           |
|------------|-----------|
| MLS® #     | E4430367  |
| Price      | \$800,000 |
| Bedrooms   | 4         |
| Bathrooms  | 3.00      |
| Full Baths | 3         |



|                |                        |
|----------------|------------------------|
| Square Footage | 1,964                  |
| Acres          | 0.00                   |
| Year Built     | 1997                   |
| Type           | Single Family          |
| Sub-Type       | Detached Single Family |
| Style          | Bungalow               |
| Status         | Active                 |

### **Community Information**

|             |                      |
|-------------|----------------------|
| Address     | 703 Carter Crest Way |
| Area        | Edmonton             |
| Subdivision | Carter Crest         |
| City        | Edmonton             |
| County      | ALBERTA              |
| Province    | AB                   |
| Postal Code | T6R 2N3              |

### **Amenities**

|           |   |
|-----------|---|
| Amenities | Deck, Exterior Walls- 2"x6", Vaulted Ceiling, Vinyl Windows |
| Parking   | Double Garage Attached, Insulated, Over Sized, RV Parking   |

### **Interior**

|                   |  |
|-------------------|--|
| Interior Features | ensuite bathroom   |
| Appliances        | Dishwasher-Built-In, Dryer, Hood Fan, Oven-Built-In, Oven-Microwave, Refrigerator, Stove-Countertop Electric, Washer |
| Heating           | Forced Air-1, Natural Gas  |
| Fireplace         | Yes  |
| Fireplaces        | Mantel, Tile Surround  |
| Stories           | 2  |
| Has Basement      | Yes  |
| Basement          | Full, Finished   |

### **Exterior**

|                   |   |
|-------------------|---|
| Exterior          | Wood, Stucco  |
| Exterior Features | Corner Lot, Fenced, Fruit Trees/Shrubs, Park/Reserve, Playground Nearby, Public Transportation, Schools, Shopping Nearby, Treed Lot |
| Lot Description   | 57'x124'  |
| Roof              | Pine Shakes   |
| Construction      | Wood, Stucco  |

Foundation                      Concrete Perimeter

**School Information**

Elementary                      GEORGE H LUCK  
Middle                              RIVERBEND  
High                                LILLIAN OSBORNE

**Additional Information**

Date Listed                      April 11th, 2025  
Days on Market                8  
Zoning                              Zone 14  
HOA Fees                        210  
HOA Fees Freq.                Annually

DATA IS DEEMED RELIABLE BUT IS NOT GUARANTEED ACCURATE BY THE REALTORS® ASSOCIATION OF EDMONTON. COPYRIGHT 2025 BY THE REALTORS® ASSOCIATION OF EDMONTON. ALL RIGHTS RESERVED.Trademarks are owned or controlled by the Canadian Real Estate Association (CREA) and identify real estate professionals who are members of CREA (REALTOR®, REALTORS®) and/or the quality of services they provide (MLS®, Multiple Listing Service®)  
Listing information last updated on April 19th, 2025 at 9:32am MDT