

\$495,000 - 14 Maywood Road, Sherwood Park

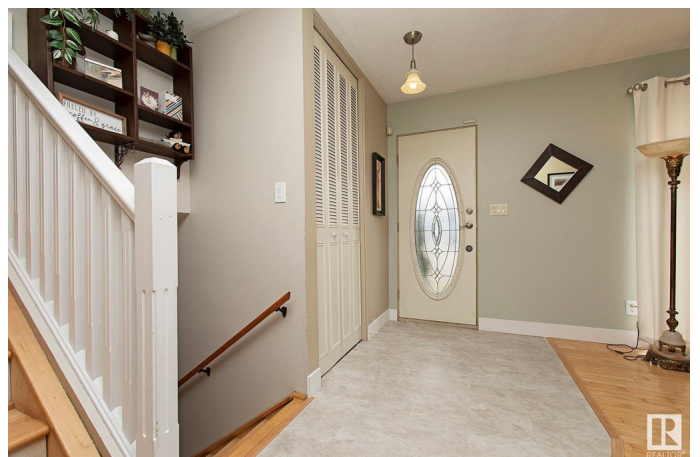
MLS® #E4430027

\$495,000

4 Bedroom, 2.00 Bathroom, 1,277 sqft
Single Family on 0.00 Acres

Maplewood (Sherwood Park), Sherwood Park,
AB

BACKING ONTO PARK & nestled in on a quiet street, this home has been meticulously cared-for. Do not hesitate, as this is a rare gem of Sherwood Park. This 4-Level Split has over 2,400 SqFt of Living space including 1,276 SqFt Above-Grade. 4 Bedrooms (potential for a 5th); 3 Bathrooms & a HUGE, Oversized Double Garage. UPGRADES: NEW 50 Year RUBBER Shingles (2019); Hi-Eff Furnace (2019); Most Windows replaced; New Tile Surround in Bathroom to name a few. The Main Floor has Hardwood in the spacious Living Rm & the Dining Rm leads to the amazing, remodelled Kitchen (2004) boasting plenty of Cabinets & Counterspace for the gourmet chef in your household! The Upper Floor has 3 Bedrms each having Hardwood & incl. a large Primary Bedrm c/w a 1/2 Ensuite. The Main Bathrm completes this floor. The 3rd Level has a Family Rm w. a W/B Fireplace; 4th Bedrm; Laundry & Bathrm. The Finished Basement has a large Rec Rm; Den & Storage. The massive yard leads to the park. What an amazing family home! Don't miss out!



Built in 1970

Essential Information

MLS® #	E4430027
Price	\$495,000

Bedrooms	4
Bathrooms	2.00
Full Baths	1
Half Baths	2
Square Footage	1,277
Acres	0.00
Year Built	1970
Type	Single Family
Sub-Type	Detached Single Family
Style	4 Level Split
Status	Active

Community Information

Address	14 Maywood Road
Area	Sherwood Park
Subdivision	Maplewood (Sherwood Park)
City	Sherwood Park
County	ALBERTA
Province	AB
Postal Code	T8A 0K1

Amenities

Amenities	Patio, See Remarks
Parking Spaces	6
Parking	Double Garage Detached

Interior

Interior Features	ensuite bathroom
Appliances	Dishwasher-Built-In, Dryer, Garage Control, Garage Opener, Oven-Microwave, Refrigerator, Stove-Electric, Vacuum Systems, Washer, Window Coverings
Heating	Forced Air-1, Natural Gas
Fireplace	Yes
Fireplaces	Brick Facing
Stories	4
Has Basement	Yes
Basement	Full, Finished

Exterior

Exterior	Wood, Stucco, Vinyl
Exterior Features	Backs Onto Park/Trees, Fenced, Landscaped, Park/Reserve, Playground Nearby, Public Transportation, Schools, Shopping Nearby, See Remarks
Roof	Asphalt Shingles
Construction	Wood, Stucco, Vinyl
Foundation	Concrete Perimeter

Additional Information

Date Listed April 10th, 2025

Days on Market 3

Zoning Zone 25

DATA IS DEEMED RELIABLE BUT IS NOT GUARANTEED ACCURATE BY THE REALTORS® ASSOCIATION OF EDMONTON. COPYRIGHT 2025 BY THE REALTORS® ASSOCIATION OF EDMONTON. ALL RIGHTS RESERVED. Trademarks are owned or controlled by the Canadian Real Estate Association (CREA) and identify real estate professionals who are members of CREA (REALTOR®, REALTORS®) and/or the quality of services they provide (MLS®, Multiple Listing Service®)

Listing information last updated on April 13th, 2025 at 1:32pm MDT