

\$499,900 - 49 50 Edinburgh Court, St. Albert

MLS® #E4429856

\$499,900

3 Bedroom, 2.50 Bathroom, 1,631 sqft
Condo / Townhouse on 0.00 Acres

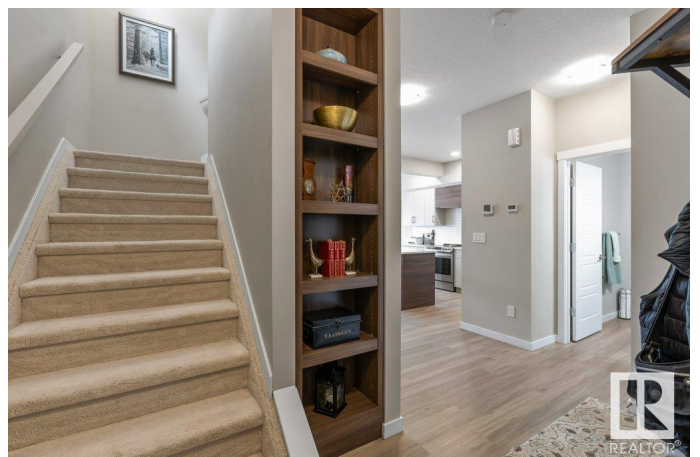
Erin Ridge North, St. Albert, AB

Welcome to this beautifully upgraded 1,630sqft half duplex in desirable Erin Ridge. From top to bottom, this home showcases modern design and thoughtful details, including granite throughout, custom cabinetry, upgraded light fixtures, and A/C. The main flr features 9ft ceilings, luxury vinyl plank, open-concept layout, and cozy electric fireplace. The kitchen comes fully equipped with all appliances and offers a functional yet stylish space to cook and entertain. Upstairs youâ€™ll find plush carpeting and convenience of upper-floor laundry. The spacious primary bedroom is a true retreat with vaulted ceiling, bright 4pc ensuite, and large walk-in closet. Two additional bdrms and full bath complete the upper level. Enjoy the fully fenced, south-facing backyard with large deck, perfect for summer evenings, as well as a 550sqft fenced garden area. With no home directly behind, youâ€™ll appreciate the added privacy and sunshine. Located within walking distance to parks, schools, pathways, and all major amenities.

Built in 2021

Essential Information

MLS® #	E4429856
Price	\$499,900



Bedrooms	3
Bathrooms	2.50
Full Baths	2
Half Baths	1
Square Footage	1,631
Acres	0.00
Year Built	2021
Type	Condo / Townhouse
Sub-Type	Townhouse
Style	2 Storey
Status	Active

Community Information

Address	49 50 Edinburgh Court
Area	St. Albert
Subdivision	Erin Ridge North
City	St. Albert
County	ALBERTA
Province	AB
Postal Code	T8N 7X5

Amenities

Amenities	Air Conditioner, Ceiling 9 ft., Deck
Parking Spaces	4
Parking	Double Garage Attached

Interior

Interior Features	ensuite bathroom
Appliances	Air Conditioning-Central, Dishwasher-Built-In, Garage Control, Garage Opener, Hood Fan, Refrigerator, Stacked Washer/Dryer, Stove-Electric
Heating	Forced Air-1, Natural Gas
Fireplace	Yes
Fireplaces	Insert, Mantel
Stories	2
Has Basement	Yes
Basement	Full, Unfinished

Exterior

Exterior	Wood, Stucco
----------	--------------

Exterior Features	Fenced, Golf Nearby, Landscaped, Park/Reserve, Playground Nearby, Public Transportation, Schools, Shopping Nearby
Roof	Asphalt Shingles
Construction	Wood, Stucco
Foundation	Concrete Perimeter

Additional Information

Date Listed	April 9th, 2025
Days on Market	6
Zoning	Zone 24
Condo Fee	\$185

DATA IS DEEMED RELIABLE BUT IS NOT GUARANTEED ACCURATE BY THE REALTORS® ASSOCIATION OF EDMONTON. COPYRIGHT 2025 BY THE REALTORS® ASSOCIATION OF EDMONTON. ALL RIGHTS RESERVED. Trademarks are owned or controlled by the Canadian Real Estate Association (CREA) and identify real estate professionals who are members of CREA (REALTOR®, REALTORS®) and/or the quality of services they provide (MLS®, Multiple Listing Service®)

Listing information last updated on April 15th, 2025 at 1:47am MDT