

\$685,000 - 10 Spring Ridge Gardens, Spruce Grove

MLS® #E4429688

\$685,000

5 Bedroom, 3.50 Bathroom, 2,318 sqft

Single Family on 0.00 Acres

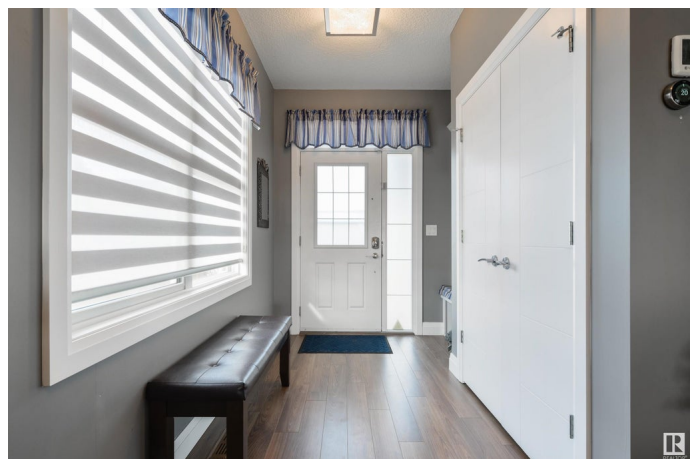
Spruce Ridge, Spruce Grove, AB

Amazing location with an even better VIEW!!! ALL the boxes are checked here, and we mean ALL of them. Gem exterior lighting, central A/C, open floor plan, 9'™ ceilings, full-height cabinetry in the Chef's™ kitchen with built-in appliances, QUARTZ countertops, & center island, gas fireplace in the living room, coffered dining room ceilings, vaulted bonus room ceilings, FIVE total bedrooms including a king-sized owner's™ suite with walk-in closet & 5pc ensuite, upper-level laundry room, fully-finished basement, and a HEATED & oversized double-attached garage just to name a few. Now let's™ talk about the yard & positioning of this home – "PIE-SHAPED, in a CUL-DE-SAC, siding the WALKING TRAIL with a MASSIVE low-maintenance exterior deck (with ample storage underneath), and the most incredible GREENSPACE view. If you've™ been searching for your dream home, look no further, this is it!

Built in 2014

Essential Information

MLS® #	E4429688
Price	\$685,000
Bedrooms	5
Bathrooms	3.50



Full Baths	3
Half Baths	1
Square Footage	2,318
Acres	0.00
Year Built	2014
Type	Single Family
Sub-Type	Detached Single Family
Style	2 Storey
Status	Active

Community Information

Address	10 Spring Ridge Gardens
Area	Spruce Grove
Subdivision	Spruce Ridge
City	Spruce Grove
County	ALBERTA
Province	AB
Postal Code	T7X 0S6

Amenities

Amenities	Air Conditioner, Ceiling 9 ft., Deck, No Animal Home, No Smoking Home, Vaulted Ceiling, See Remarks, HRV System, 9 ft. Basement Ceiling
Parking	Double Garage Attached, Heated, Over Sized
Is Waterfront	Yes

Interior

Interior Features	ensuite bathroom
Appliances	Dishwasher-Built-In, Dryer, Garage Control, Garage Opener, Microwave Hood Fan, Refrigerator, Stove-Electric, Washer, Window Coverings
Heating	Forced Air-1, Natural Gas
Fireplace	Yes
Fireplaces	See Remarks
Stories	3
Has Basement	Yes
Basement	Full, Finished

Exterior

Exterior	Wood, Stone, Vinyl
----------	--------------------

Exterior Features	Backs Onto Lake, Cul-De-Sac, Fenced, Landscaped, Playground Nearby, Public Transportation, Schools, Shopping Nearby, See Remarks
Roof	Asphalt Shingles
Construction	Wood, Stone, Vinyl
Foundation	Concrete Perimeter

Additional Information

Date Listed	April 8th, 2025
Days on Market	8
Zoning	Zone 91

DATA IS DEEMED RELIABLE BUT IS NOT GUARANTEED ACCURATE BY THE REALTORS® ASSOCIATION OF EDMONTON. COPYRIGHT 2025 BY THE REALTORS® ASSOCIATION OF EDMONTON. ALL RIGHTS RESERVED.Trademarks are owned or controlled by the Canadian Real Estate Association (CREA) and identify real estate professionals who are members of CREA (REALTOR®, REALTORS®) and/or the quality of services they provide (MLS®, Multiple Listing Service®)

Listing information last updated on April 16th, 2025 at 1:47pm MDT