

\$189,000 - 116 Surrey Gardens, Edmonton

MLS® #E4428333

\$189,000

3 Bedroom, 1.00 Bathroom, 1,045 sqft
Condo / Townhouse on 0.00 Acres

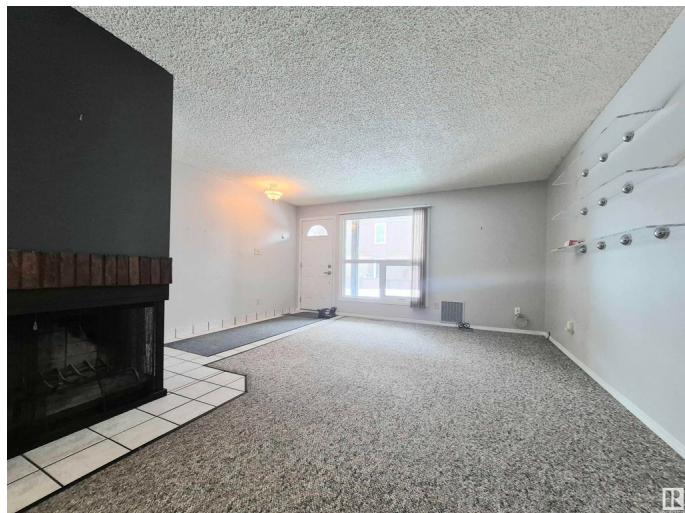
Lymburn, Edmonton, AB

Looking for a spacious home with a touch of nature? This exceptional 3-bedroom, 1,000+ sq.ft. end-unit condo in Surrey Gardens is the perfect retreat! Featuring its own private front yard with large, beautiful trees, this home offers tranquility and privacy. Enjoy your own covered patio and garden, a peaceful oasis for relaxation or entertaining. Located in the quiet, family-friendly Lymburn neighborhood, you'll have the best of both worlds: a serene setting just minutes away from all the essential amenities. Ready to move in and make it your own—this stylish, well-maintained unit is designed for modern living with comfort and convenience in mind. Don't miss out on this rare opportunity to live in a peaceful, private home with your own outdoor space!

Built in 1977

Essential Information

| | |
|----------------|-----------|
| MLS® # | E4428333 |
| Price | \$189,000 |
| Bedrooms | 3 |
| Bathrooms | 1.00 |
| Full Baths | 1 |
| Square Footage | 1,045 |
| Acres | 0.00 |
| Year Built | 1977 |



| | |
|----------|-------------------|
| Type | Condo / Townhouse |
| Sub-Type | Carriage |
| Style | Bungalow |
| Status | Active |

Community Information

| | |
|-------------|--------------------|
| Address | 116 Surrey Gardens |
| Area | Edmonton |
| Subdivision | Lymburn |
| City | Edmonton |
| County | ALBERTA |
| Province | AB |
| Postal Code | T5T 1Z3 |

Amenities

| | |
|----------------|---|
| Amenities | Closet Organizers, Deck, Parking-Plug-Ins, Parking-Visitor, Vinyl Windows |
| Parking Spaces | 1 |
| Parking | Stall, See Remarks |

Interior

| | |
|--------------|---|
| Appliances | Dishwasher-Built-In, Dryer, Fan-Ceiling, Hood Fan, Refrigerator, Stove-Electric, Washer |
| Heating | Forced Air-1, Natural Gas |
| Fireplace | Yes |
| Fireplaces | Corner |
| Stories | 1 |
| Has Basement | Yes |
| Basement | None, No Basement |

Exterior

| | |
|-------------------|---|
| Exterior | Wood, Stucco |
| Exterior Features | Playground Nearby, Public Transportation, Schools, Shopping Nearby, Treed Lot |
| Roof | Asphalt Shingles |
| Construction | Wood, Stucco |
| Foundation | Concrete Perimeter |

Additional Information

| | |
|-------------|------------------|
| Date Listed | March 31st, 2025 |
|-------------|------------------|

| | |
|----------------|---------|
| Days on Market | 12 |
| Zoning | Zone 20 |
| Condo Fee | \$529 |

DATA IS DEEMED RELIABLE BUT IS NOT GUARANTEED ACCURATE BY THE REALTORS® ASSOCIATION OF EDMONTON. COPYRIGHT 2025 BY THE REALTORS® ASSOCIATION OF EDMONTON. ALL RIGHTS RESERVED. Trademarks are owned or controlled by the Canadian Real Estate Association (CREA) and identify real estate professionals who are members of CREA (REALTOR®, REALTORS®) and/or the quality of services they provide (MLS®, Multiple Listing Service®)

Listing information last updated on April 12th, 2025 at 8:47am MDT