

Courtesy Of Karl Karanjia Of MaxWell Polaris

\$155,000 - 301 4810 Mill Woods, Edmonton

MLS® #E4424583

\$155,000

2 Bedroom, 1.00 Bathroom, 872 sqft
Condo / Townhouse on 0.00 Acres

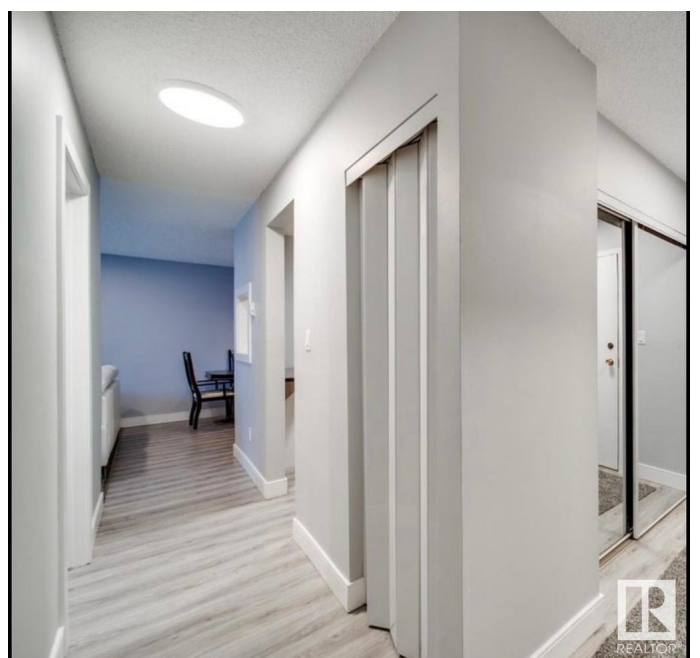
Pollard Meadows, Edmonton, AB

Beautifully Renovated 2-Bedroom Apartment in Pollard Meadows! Welcome to this stunning third-floor 2-bedroom, 1-bathroom apartment in the heart of Pollard Meadows! Recently renovated, this home features modern upgrades while maintaining a warm and inviting atmosphere. Step inside to find a spacious living area filled with natural light, complemented by contemporary flooring throughout. The kitchen boasts updated countertops, sleek cabinetry, and modern appliances, making meal prep a breeze. Both bedrooms offer ample closet space, and the refreshed bathroom showcases stylish finishes. Enjoy the convenience of in-suite storage, a private balcony, and easy access to local amenities. Situated in a well-managed building, you're just minutes from parks, schools, shopping, and public transit. Perfect for first-time buyers, downsizers, or investors.

Built in 1981

Essential Information

MLS® #	E4424583
Price	\$155,000
Bedrooms	2
Bathrooms	1.00
Full Baths	1
Square Footage	872



Acres	0.00
Year Built	1981
Type	Condo / Townhouse
Sub-Type	Lowrise Apartment
Style	Single Level Apartment
Status	Active

Community Information

Address	301 4810 Mill Woods
Area	Edmonton
Subdivision	Pollard Meadows
City	Edmonton
County	ALBERTA
Province	AB
Postal Code	T6L 5N9

Amenities

Amenities	Detectors Smoke
Parking	Stall

Interior

Appliances	Dishwasher-Built-In, Hood Fan, Refrigerator, Stove-Electric
Heating	Hot Water, Natural Gas
# of Stories	4
Stories	1
Has Basement	Yes
Basement	None, No Basement

Exterior

Exterior	Wood, Stucco
Exterior Features	Playground Nearby, Public Transportation, Schools, Shopping Nearby
Roof	Asphalt Shingles
Construction	Wood, Stucco
Foundation	Concrete Perimeter

Additional Information

Date Listed	March 7th, 2025
Days on Market	30
Zoning	Zone 29

Condo Fee \$504

DATA IS DEEMED RELIABLE BUT IS NOT GUARANTEED ACCURATE BY THE REALTORS® ASSOCIATION OF EDMONTON. COPYRIGHT 2025 BY THE REALTORS® ASSOCIATION OF EDMONTON. ALL RIGHTS RESERVED. Trademarks are owned or controlled by the Canadian Real Estate Association (CREA) and identify real estate professionals who are members of CREA (REALTOR®, REALTORS®) and/or the quality of services they provide (MLS®, Multiple Listing Service®)

Listing information last updated on April 6th, 2025 at 11:32am MDT