

Courtesy Of Jasen E Reboh Of RE/MAX Excellence

# \$138,880 - 1609 10024 Jasper Avenue, Edmonton

MLS® #E4421637

**\$138,880**

1 Bedroom, 1.00 Bathroom, 589 sqft  
Condo / Townhouse on 0.00 Acres

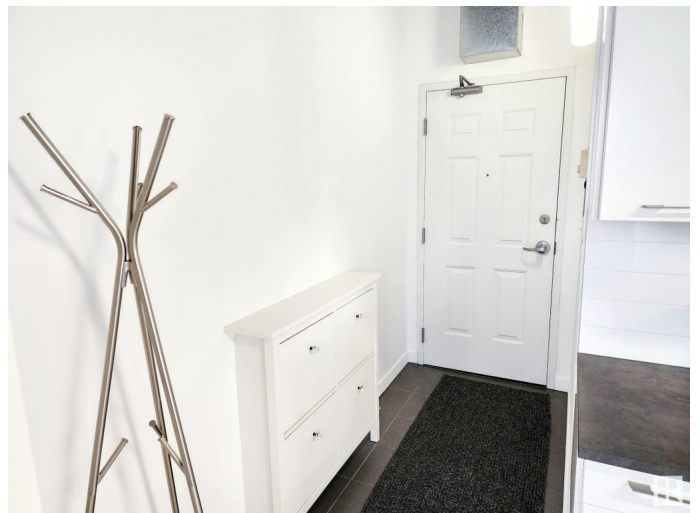
Downtown (Edmonton), Edmonton, AB

Discover urban living at its finest in the New Cambridge Lofts, perfectly situated in a prime downtown Edmonton location. This immaculate SOUTH-WEST CORNER unit offers SUNNY breathtaking views of the city, Walterdale bridge & river valley w/ 6 massive windows and soaring 10'™ ceilings flooding the space with natural light. Enjoy a newly upgraded modern kitchen, sleek vinyl plank floors, & a cozy electric fireplace. With the LRT's Central Station right in the building, access to the downtown pedway system, Rogers Place, City Hall, Library, the Art Gallery, and more is just steps away"no need for driving or parking expenses. Walk to all major downtown venues, the River Valley, and vibrant attractions. The building features a full-time doorman and enhanced security cameras for peace of mind. Whether you're a professional working downtown or an investor seeking an exceptional property, this loft offers unmatched convenience and style. Turn Key Short Term Rental AirBNB & VRBO Allowed.

Built in 1968

## Essential Information

MLS® #	E4421637
Price	\$138,880



Bedrooms	1
Bathrooms	1.00
Full Baths	1
Square Footage	589
Acres	0.00
Year Built	1968
Type	Condo / Townhouse
Sub-Type	Apartment High Rise
Style	Single Level Apartment
Status	Active

### **Community Information**

Address	1609 10024 Jasper Avenue
Area	Edmonton
Subdivision	Downtown (Edmonton)
City	Edmonton
County	ALBERTA
Province	AB
Postal Code	T5J 1R9

### **Amenities**

Amenities	Ceiling 10 ft., Security Door, Security Personnel, Sprinkler System-Fire
Parking	No Parking

### **Interior**

Appliances	Dishwasher-Built-In, Microwave Hood Fan, Refrigerator, Stacked Washer/Dryer, Stove-Electric, Window Coverings
Heating	Baseboard, Electric
Fireplace	Yes
Fireplaces	Wall Mount
# of Stories	18
Stories	1
Has Basement	Yes
Basement	None, No Basement

### **Exterior**

Exterior	Concrete, Metal
Exterior Features	Golf Nearby, Public Transportation, River Valley View, Shopping Nearby, View Downtown

Roof	Tar & Gravel
Construction	Concrete, Metal
Foundation	Concrete Perimeter

### **Additional Information**

Date Listed	February 14th, 2025
Days on Market	26
Zoning	Zone 12
Condo Fee	\$559

DATA IS DEEMED RELIABLE BUT IS NOT GUARANTEED ACCURATE BY THE REALTORS® ASSOCIATION OF EDMONTON. COPYRIGHT 2025 BY THE REALTORS® ASSOCIATION OF EDMONTON. ALL RIGHTS RESERVED. Trademarks are owned or controlled by the Canadian Real Estate Association (CREA) and identify real estate professionals who are members of CREA (REALTOR®, REALTORS®) and/or the quality of services they provide (MLS®, Multiple Listing Service®)

Listing information last updated on March 12th, 2025 at 8:02pm MDT