

\$149,900 - 110 10511 42 Avenue, Edmonton

MLS® #E4420528

\$149,900

1 Bedroom, 1.00 Bathroom, 710 sqft

Condo / Townhouse on 0.00 Acres

Rideau Park (Edmonton), Edmonton, AB

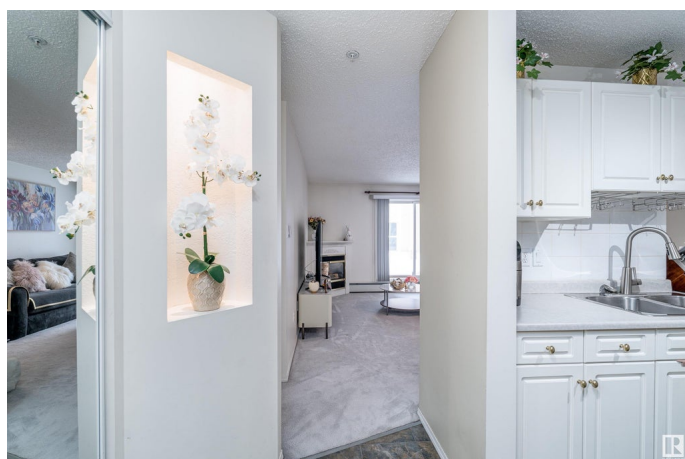
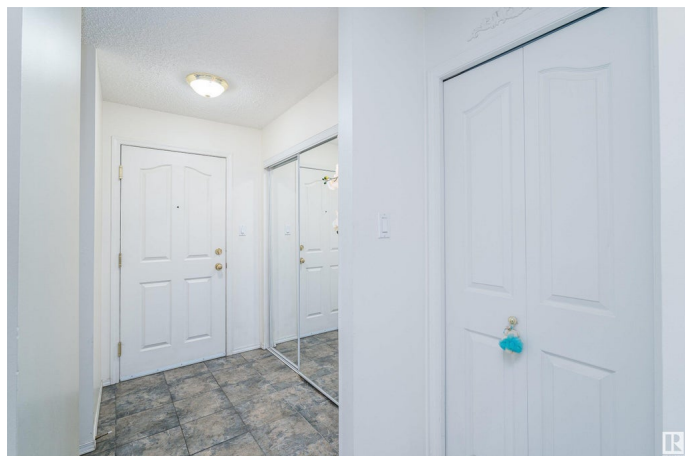
This affordable and meticulously maintained 1-bedroom condo is offering convenient access to Whitemud Drive, Highway 2, and public transit. Located near Southgate Mall and a variety of shopping options, it boasts an unbeatable location! You are welcomed by upgraded tile flooring in this thoughtfully designed unit, its unique layout that create a warm, inviting atmosphere. The spacious living room opens onto a serene patio that overlooks a tranquil courtyard. The kitchen features an abundance of counter space and cabinetry, and there's even space for bar stools for quick dining options. A dedicated dining area is conveniently positioned to the side, complementing the open-concept layout. The bedroom is generously sized, allowing space for a gaming setup or office desk. And a well-appointed 4-piece bathroom and laundry/storage area round out this unit. It comes with heated underground parking and storage cage, heat and water are included in the condo fees, making this a must-see property!

Built in 1998

Essential Information

MLS® # E4420528

Price \$149,900



Bedrooms	1
Bathrooms	1.00
Full Baths	1
Square Footage	710
Acres	0.00
Year Built	1998
Type	Condo / Townhouse
Sub-Type	Lowrise Apartment
Style	Single Level Apartment
Status	Active

Community Information

Address	110 10511 42 Avenue
Area	Edmonton
Subdivision	Rideau Park (Edmonton)
City	Edmonton
County	ALBERTA
Province	AB
Postal Code	T6J 7G8

Amenities

Amenities	Detectors Smoke, Exercise Room, No Animal Home, No Smoking Home, Parking-Visitor, Party Room, Patio, Secured Parking, Social Rooms, Storage Cage
Parking	Heated, Underground

Interior

Appliances	Dishwasher-Built-In, Hood Fan, Refrigerator, Stacked Washer/Dryer, Stove-Electric, Window Coverings
Heating	Baseboard, Natural Gas
# of Stories	4
Stories	4
Has Basement	Yes
Basement	None, No Basement

Exterior

Exterior	Wood, Stucco
Exterior Features	Flat Site, Landscaped, Public Transportation, Schools, Shopping Nearby
Roof	Asphalt Shingles

Construction	Wood, Stucco
Foundation	Concrete Perimeter

Additional Information

Date Listed	February 6th, 2025
Days on Market	72
Zoning	Zone 16
Condo Fee	\$483

DATA IS DEEMED RELIABLE BUT IS NOT GUARANTEED ACCURATE BY THE REALTORS® ASSOCIATION OF EDMONTON. COPYRIGHT 2025 BY THE REALTORS® ASSOCIATION OF EDMONTON. ALL RIGHTS RESERVED.Trademarks are owned or controlled by the Canadian Real Estate Association (CREA) and identify real estate professionals who are members of CREA (REALTOR®, REALTORS®) and/or the quality of services they provide (MLS®, Multiple Listing Service®)

Listing information last updated on April 19th, 2025 at 2:17am MDT