

\$598,888 - 10942 80 Avenue, Edmonton

MLS® #E4420364

\$598,888

6 Bedroom, 3.00 Bathroom, 928 sqft
Single Family on 0.00 Acres

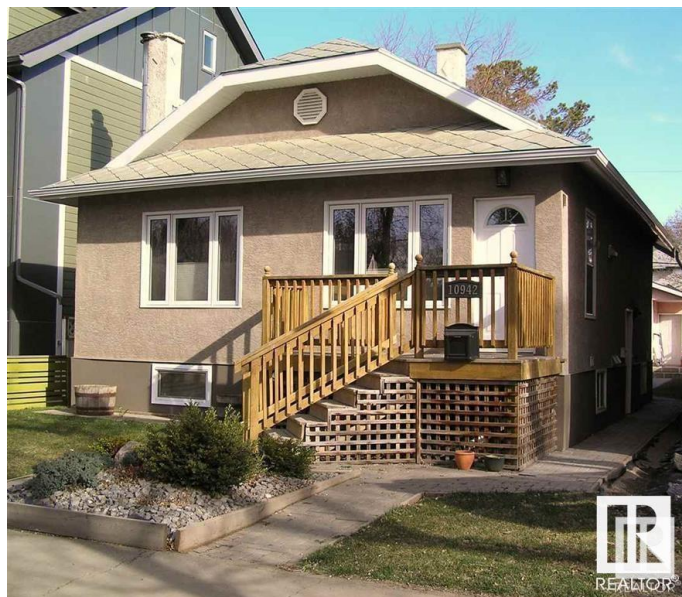
Garneau, Edmonton, AB

6 BEDROOM HOME is what this very nice bungalow with lots of character has to offer. There are a total of 3 full bathrooms, 3 bedrooms up and 2 bedrooms down and 1 private bedroom in the studio with a full bathroom. The MAIN Kitchen offers a nice counter top with a gas stove and lots of cupboard space. The basement HAS 2 bedrooms, laundry room, 3 pc bath, and another kitchen with refrigerator, dishwasher and lots of cupboard space to enjoy. Ideally located close to U of A Hospital and Campus, Easy access to Whyte Ave, and the LRT. You have to see this property with a wonderful backyard and large deck and a storage shed.

Built in 1926

Essential Information

| | |
|----------------|------------------------|
| MLS® # | E4420364 |
| Price | \$598,888 |
| Bedrooms | 6 |
| Bathrooms | 3.00 |
| Full Baths | 3 |
| Square Footage | 928 |
| Acres | 0.00 |
| Year Built | 1926 |
| Type | Single Family |
| Sub-Type | Detached Single Family |



Style Bungalow
Status Active

Community Information

Address 10942 80 Avenue
Area Edmonton
Subdivision Garneau
City Edmonton
County ALBERTA
Province AB
Postal Code T6G 0R1

Amenities

Amenities Off Street Parking, Deck, Detectors Smoke
Parking 2 Outdoor Stalls, See Remarks

Interior

Appliances Dryer, Hood Fan, Storage Shed, Stove-Gas, Washer, Window Coverings, Refrigerators-Two, Dishwasher-Two
Heating Forced Air-1, Natural Gas
Stories 2
Has Basement Yes
Basement Full, Finished

Exterior

Exterior Wood, Stucco
Exterior Features Back Lane, Fenced, Low Maintenance Landscape, Playground Nearby, Public Transportation, Schools, Shopping Nearby
Roof Metal
Construction Wood, Stucco
Foundation Concrete Perimeter

Additional Information

Date Listed February 4th, 2025
Days on Market 38
Zoning Zone 15

DATA IS DEEMED RELIABLE BUT IS NOT GUARANTEED ACCURATE BY THE REALTORS® ASSOCIATION OF EDMONTON. COPYRIGHT 2025 BY THE REALTORS® ASSOCIATION OF EDMONTON. ALL RIGHTS RESERVED. Trademarks are owned or controlled by the Canadian Real Estate Association (CREA) and identify real estate professionals who are members of CREA (REALTOR®, REALTORS®) and/or the quality of services they

provide (MLS® , Multiple Listing Service®)

Listing information last updated on March 14th, 2025 at 3:17pm MDT